

In partnership with:



NO.	DATE	REVISIONS

DRAWN BY:  
MJS

APPROVED BY:  
MGR

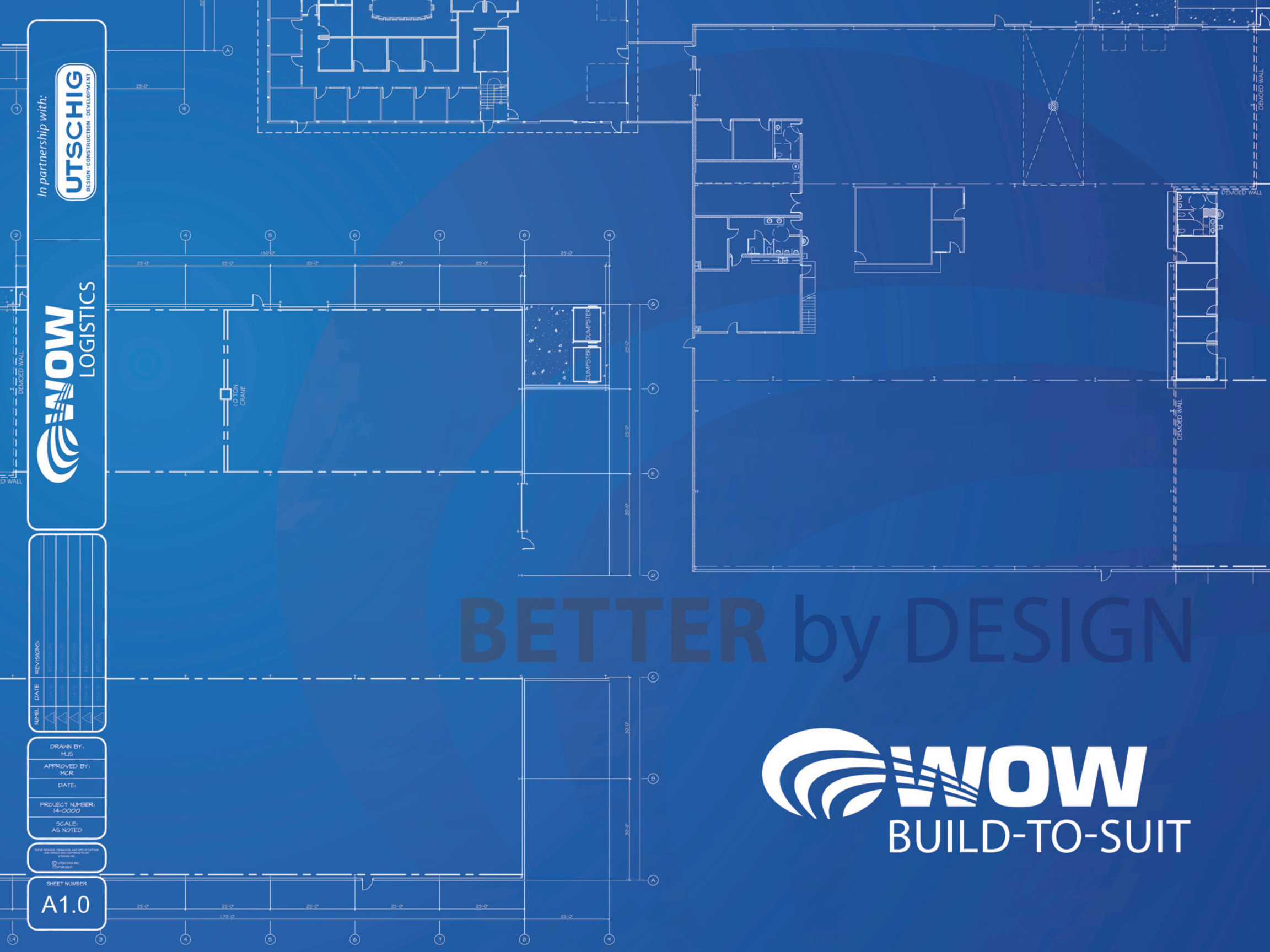
DATE:

PROJECT NUMBER:  
14-0000

SCALE:  
AS NOTED

© 2014 UTSCHIG, INC.  
All rights reserved.

SHEET NUMBER  
**A1.0**



**BETTER** by DESIGN





**BETTER** by DESIGN

A detailed architectural floor plan of a large industrial facility, likely a warehouse or food-grade processing plant. The plan shows a complex layout of rooms, corridors, and structural elements. Key features include several areas labeled "DEMOLISHED WALL" with dashed lines, a "STAIR CORNER" in the center, and a "STAIRS" area on the right. The plan is overlaid with a grid system, with horizontal lines numbered 1 through 10 and vertical lines numbered 1 through 10. Dimensions are provided in feet and inches along the grid lines. The overall structure is rectangular with various internal partitions and openings.

**WOW's strategic partnership with Utschig, Inc.** brings a wealth of experience to our customers. Not only do you tap into over 40 years of experience in warehousing/light manufacturing projects, but you also are working with an expert skilled in addressing the unique needs of food-grade facilities.

— **Howard Kamerer**  
WOW President & CEO

# BETTER by DESIGN

Sounds like a clever tagline, but it's not. This is the foundation of a **Build-To-Suit** Program WOW Logistics has built with Utschig, Inc.

Most firms can deliver a structure on-budget and on-time. We designed our program to go further, with **features no other builder can offer:**

- ✓ Lease options with **no up-front capital**
- ✓ **Experts** in warehousing and light manufacturing design
- ✓ In-house **engineering staff**
- ✓ **Value-added services**, such as contract operations and inventory financing





## BETTER DESIGN

Construction is filled with building “generalists,” firms that take on any project that comes in the door. That’s not us. WOW’s strategic partner, **Utschig Inc.**, **specializes in light manufacturing and warehousing.** We will:

- ✓ **Take an expert approach** that is highly collaborative, obtaining input from customers’ managers and supervisors
- ✓ **Perform a detailed needs analysis** to ensure all requirements, current and future, are met

## BETTER FINANCING

**It’s a fact** – building projects tie up capital. There’s no way around it...or is there? **WOW’s Build-to-Suit** program removes the burden of up-front cash, and **offers you much more**, such as:

- ✓ **100% financing**
- ✓ **15- to 20-year leases**, with **options to purchase** the building after 5 years
- ✓ A focus on finding local, state, and federal **incentives to lower costs**
- ✓ True **open-book pricing**

# BETTER ENGINEERING

If your project is a warehouse or distribution center, you'll reap the reward of **synergy** derived by our engineers and construction **professionals working together**. Their goal is to produce a facility that is highly **efficient**, through:

- ✓ Overall warehouse **design**
- ✓ **Selection and placement** of racking
- ✓ Selection of Material Handling Equipment (**MHE**)

# BETTER SERVICES

Our additional programs and services **set us apart** from all builders. We can help simplify logistics with:

- ✓ **Contract operations** – You can outsource your warehouse operations to WOW Logistics
- ✓ **Inventory financing** – WOW Logistics purchases inventory as a financial solution
- ✓ **Transportation services** – WOW Logistics specializes in food-grade trucking





# WOW – YOUR BEST BUILDING OPTION

While many builders can give you a structure **on-budget** and **on-time**, WOW brings your company unmatched **value** that is far beyond the basics.

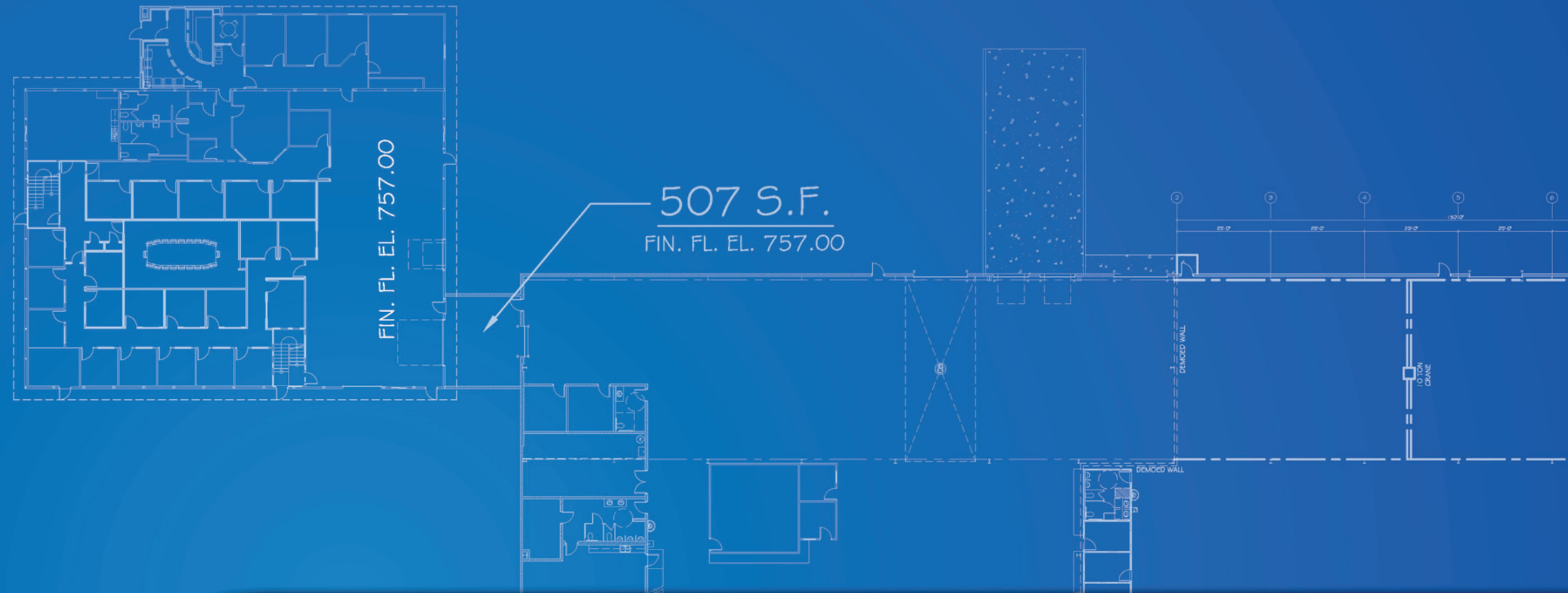
By eliminating up-front capital outlay, and utilizing design and in-the-box engineering expertise, **we deliver** a facility tailored to your needs.

Our detailed approach is dedicated to maximizing all resources to **increase efficiency**, and help you reduce operating costs – that's **BETTER by DESIGN**



*In partnership with:*





$$C + E = P$$

Each WOW employee is motivated to pursue exceptional **Customer Service** (C), and improve **Operational Efficiencies** (E). These elements result in **Profitability** (P) that is sustainable.







In partnership with:



wowlogistics.com | 800.354.0971