

# WOW Consulting Services

Expert direction to streamline your supply chain



# Company at a Glance

## WOW LOGISTICS

- Founded in 1977 as Warehousing of Wisconsin
- Locations in Wisconsin and Idaho
- Dry, and cooler storage
- Nineteen facilities totaling more than 6 million sq. ft.
- Twenty-two million cu. ft. of refrigerated space



# Built on Providing Value

WOW delivers value to its customers through its five main business units, including:

## WAREHOUSING

- Best-in-class facilities ensure safety and quality of stored products
- Food product experts
- Value-added services to further simplify customers' operations and reduce costs

## TRANSPORTATION

- Our volume helps to leverage lower costs for customers
- WOW's quality carrier network helps mitigate risk for customers
- Food product transportation expertise

## CONTRACT OPERATIONS

- Our management expertise saves customers time and money
- Focusing on key performance indicators ensures maximum productivity
- Flat rate schedule helps customers avoid fluctuations in storage costs



# Built on Providing Value – cont.

## WOW COMMODITY PURCHASE PROGRAM

- Purchase 100% of products value beats a bank and improves cash flow
- Deferred storage and handling costs further improves cash flow
- A simple application process, flexibility, and one-year commitment make us much easier to do business with, compared to a bank

## BUILD-TO-SUIT

- 100% financing means no capital outlay for customers
- 40 years of building experience ensures a facility that meets customer needs
- Design/build solutions with attractive lease options



# Supply Chain Challenges

Companies face a variety of supply chain challenges that generally fall within four main areas:

- Warehousing & Distribution
- Transportation Management
- Customer Order Fulfillment
- Logistics Technology



# Supply Chain Challenges - cont.

Lack of resources focused on logistics can lead to sub-optimal performance in key areas. For instance:

- Non-strategic warehouse location(s) = **increased** transportation costs
- Misaligned transportation strategy = **costly** inefficiencies and delays
- Inefficient pick/pack strategy = **costly** overtime
- Lack of logistics systems = **absence of data** to make effective decisions



# WOW Solution: Consulting Services

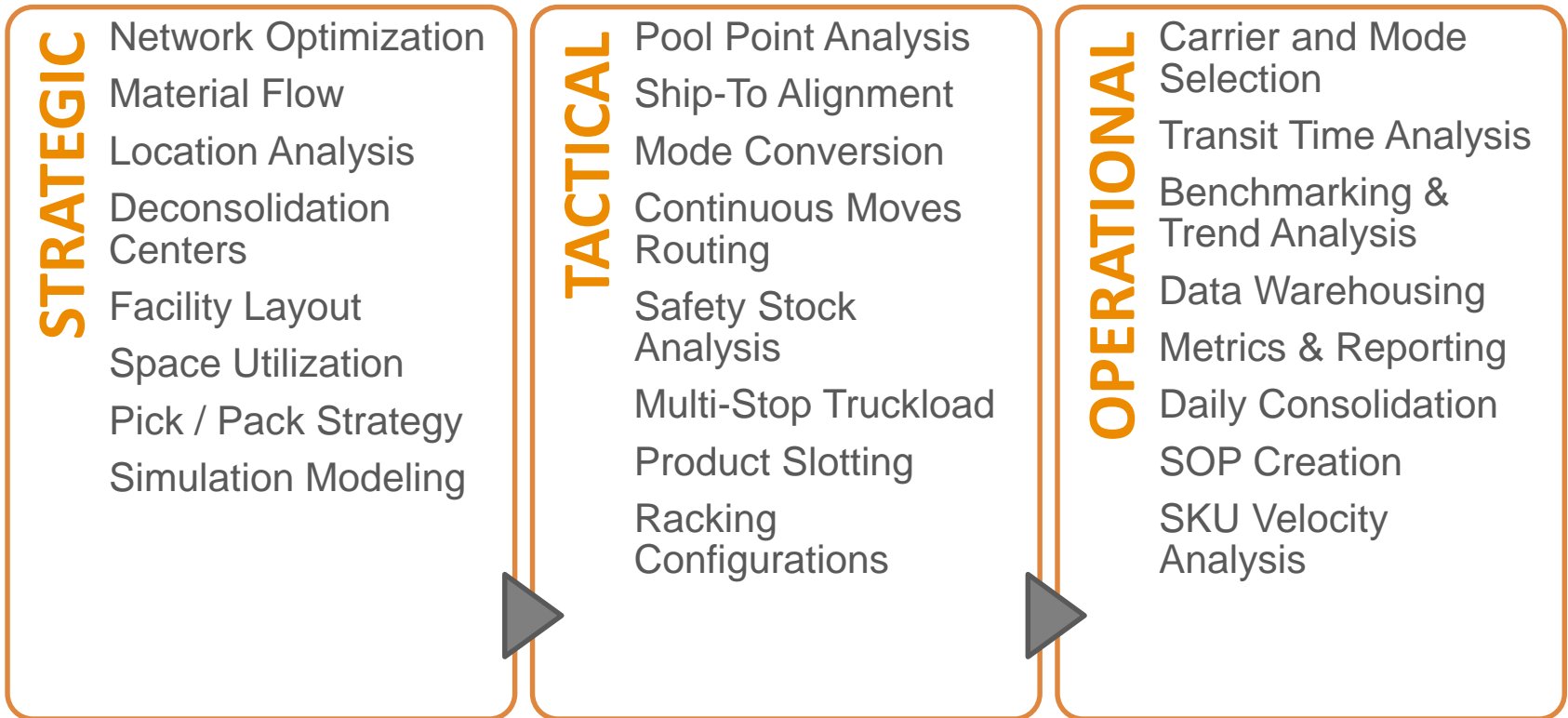
WOW utilizes our Engineering services to help **Customers** overcome these supply chain challenges. Our value includes:

- **Consultative approach** that focuses on understanding and meeting customer requirements
- **Process**-driven solutions that provide **efficiency** and **cost reductions**, but remain grounded in the reality of business constraints
- Full **understanding** of operations and logistics challenges
- Knowledge of industry standards and **best practices**
- Ability to **implement** any recommended solutions



# WOW Consulting Services - cont.

WOW offers consulting services focused on various decision making levels

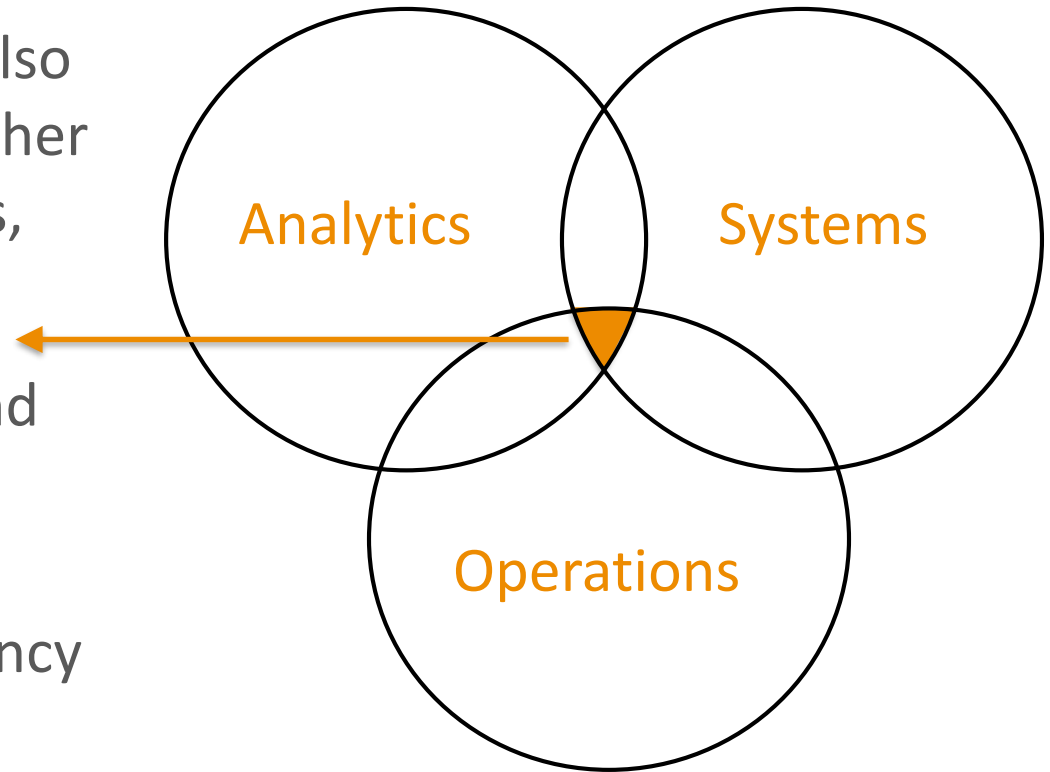




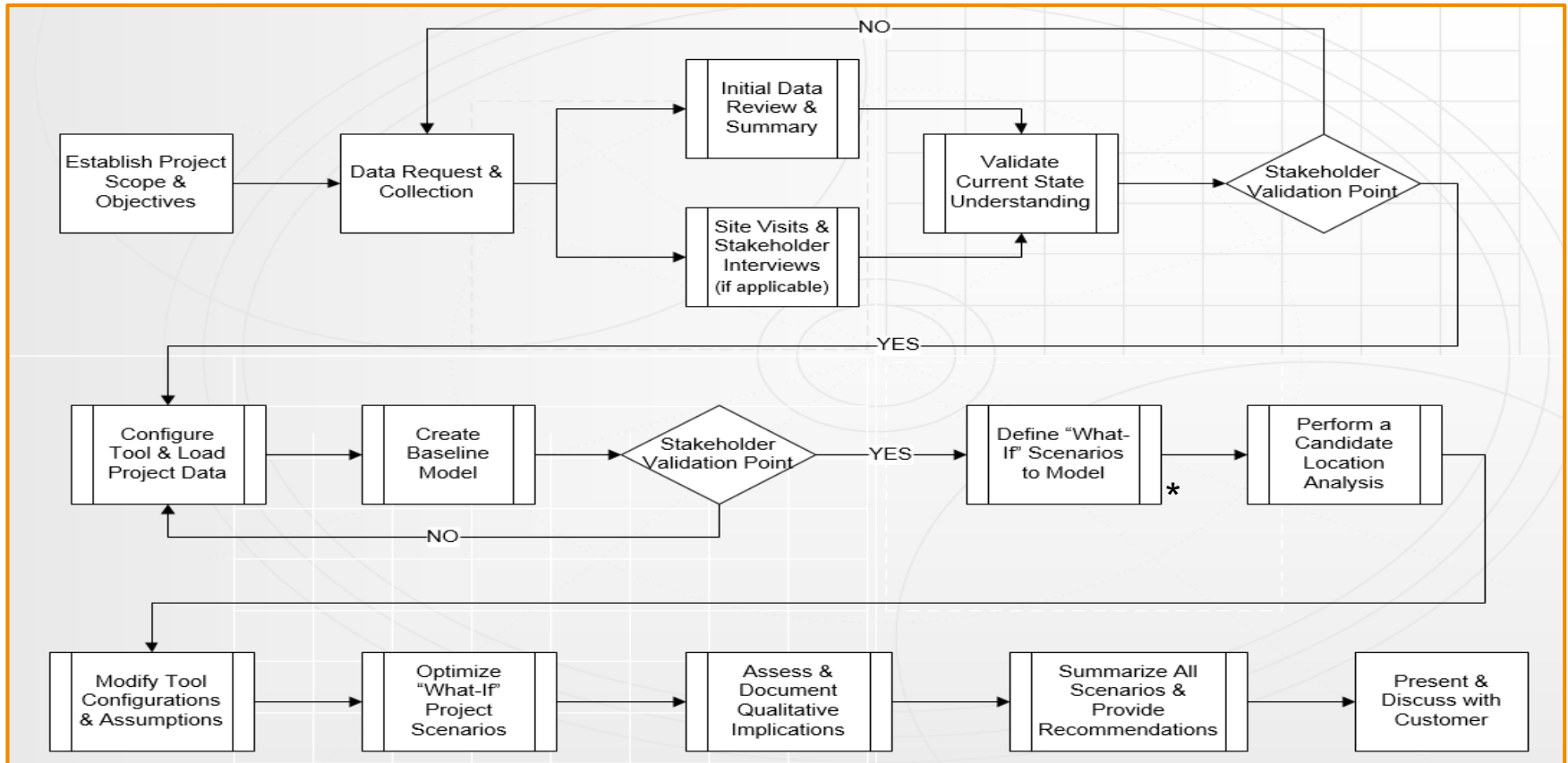
# WOW Logistics Value

WOW analytical resources also have the ability to pull together all supply chain components, resulting in:

- **Strategic** collaboration and decision making
- **Lower** total cost
- **Better** operational efficiency
- **Improved** supply chain performance



# Overview of WOW Process



\* Specific to network studies & location based analysis



# Sample Projects

## Cheese Manufacturer

**Goal:** Analyze on-hand inventory levels and layout of ambient space for dry goods / supplies.

**Timeline:** 8 weeks

**Results:**

- **Increased** operator safety
- **Optimized** safety stock levels by SKU
- Racking layout with pallet selectivity

## Dairy Powder Producer

**Goal:** Provide a draft building plan and racking layout for dairy powder storage on-site at plant.

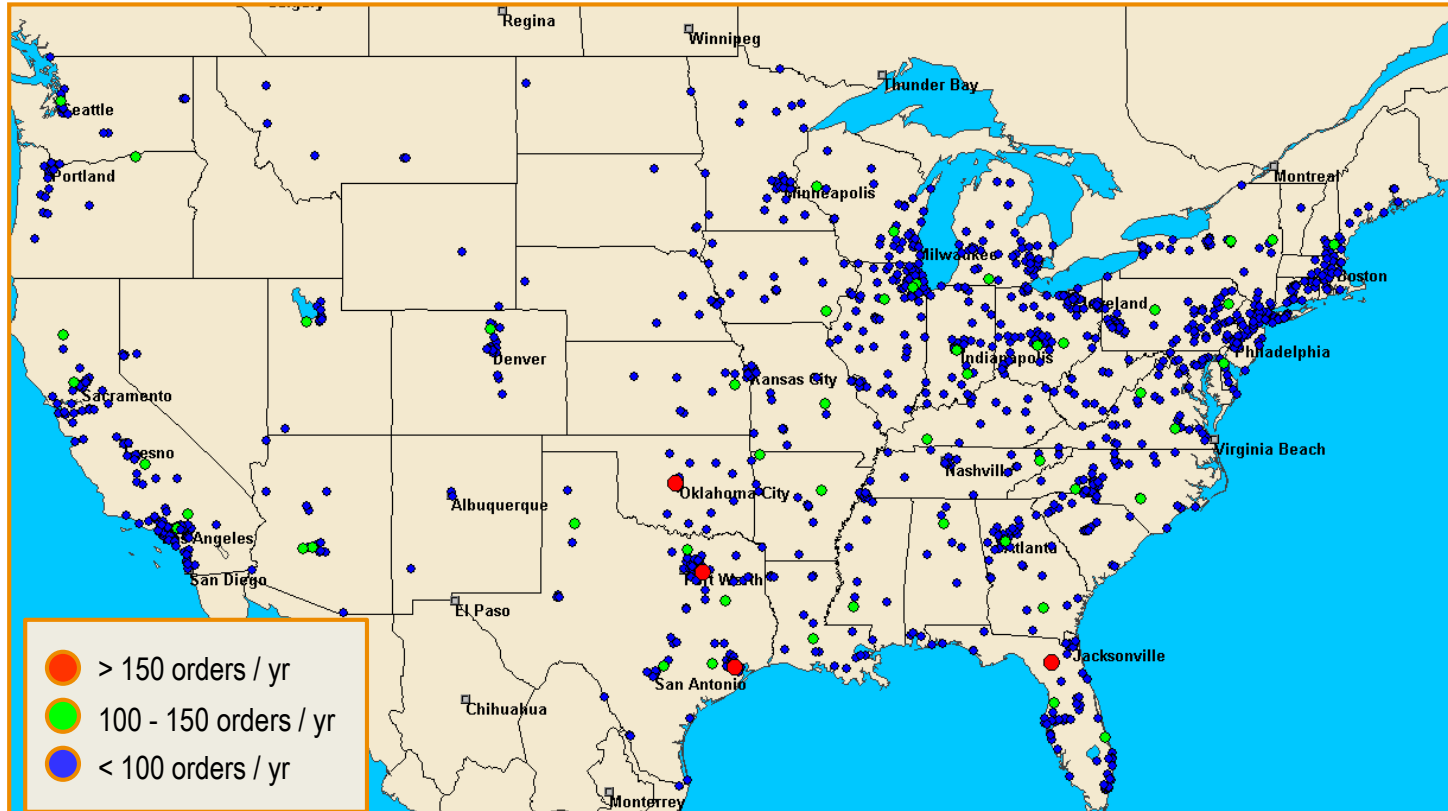
**Timeline:** 10 weeks

**Results:**

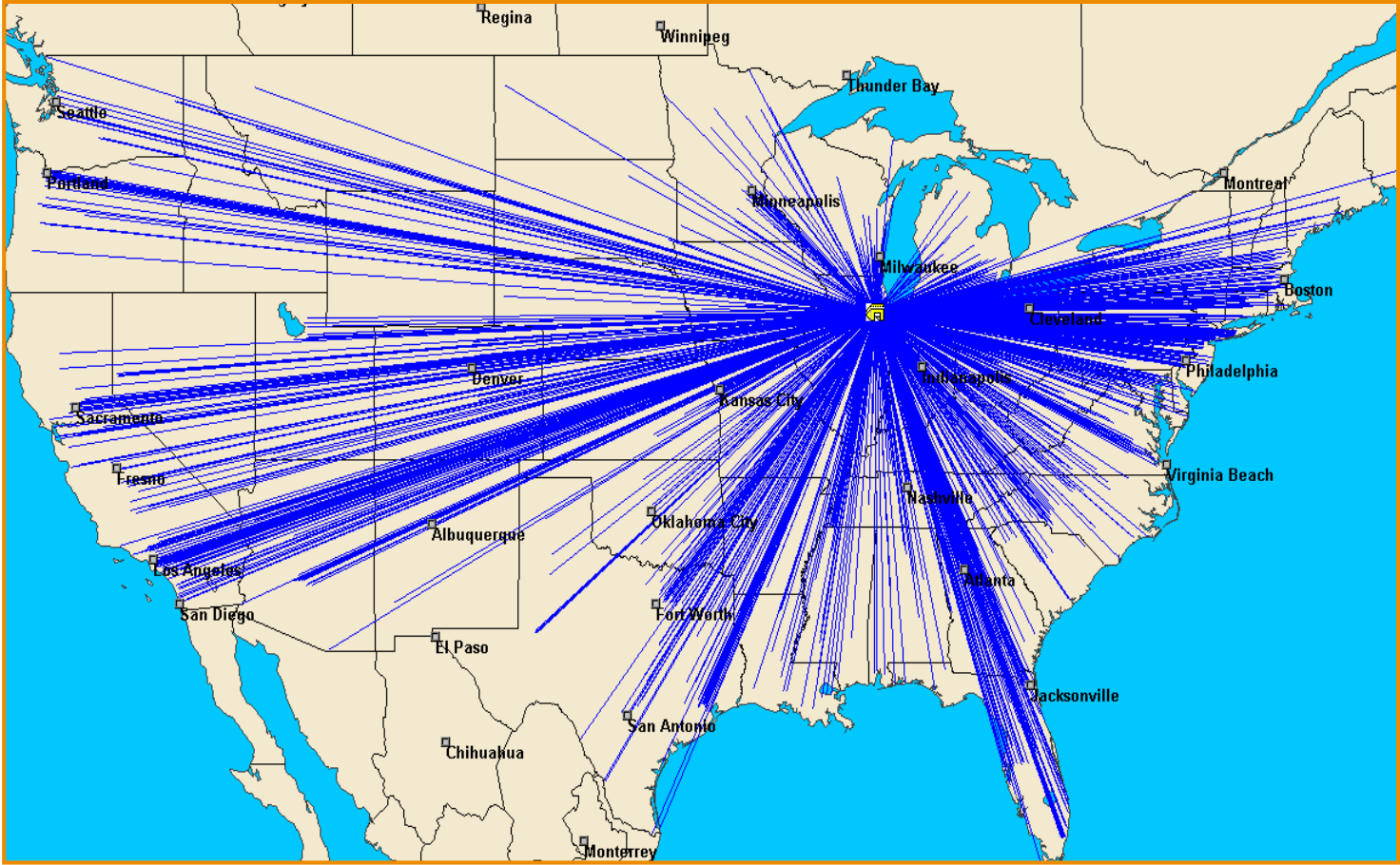
- **Maximized** sq. ft. on lot
- Racking layout **maximized** pallet capacity in storage area
- Maintained optimal material flow to **reduce** labor rqmts.



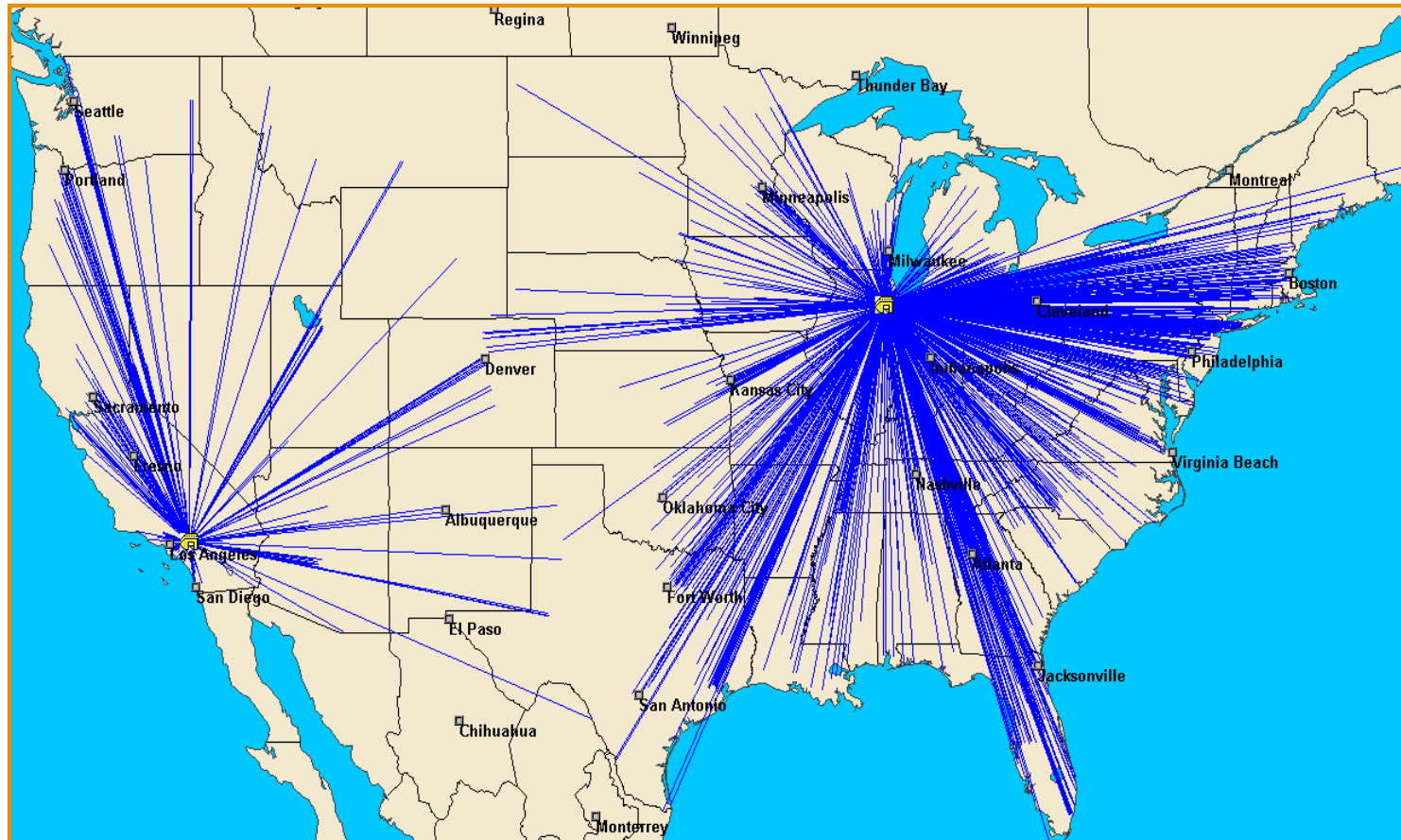
# Network Study Sample – Demand Analysis



# Network Study Sample – Current 1 DC



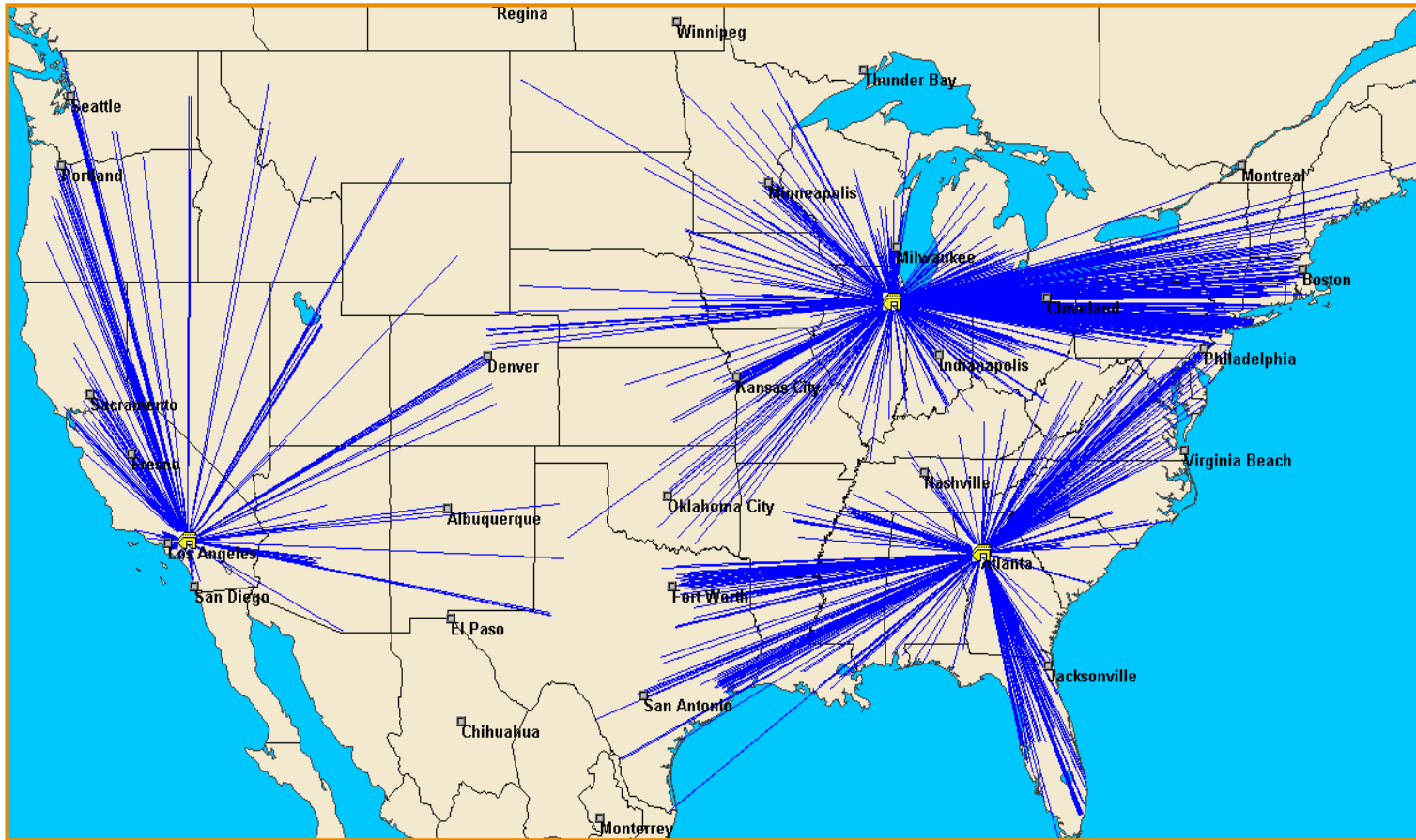
# Network Study Sample – 2 DC Option



Estimated 20+% reduction in average distance to customer demand



# Network Study Sample – 3 DC Option



Estimated 35+% reduction in average distance to customer demand



Questions?  
Next Steps...

