

For Lease



1700 Laemle Avenue | Marshfield, WI

Total building: 147,746 SF

Total available: 30,665 SF

Office: 804 SF

Available: October 1, 2022

Acreage: 14.19 Acres

Year built: 1971

Remodeled: 2004

Loading: 5 Docks

Clear Height: 24' Eaves

Power: 1200 amp, 3-phase

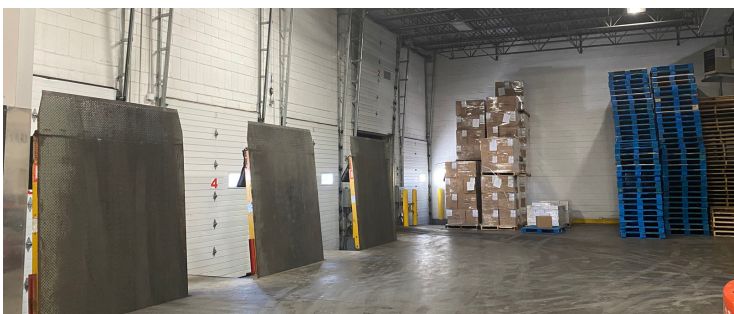
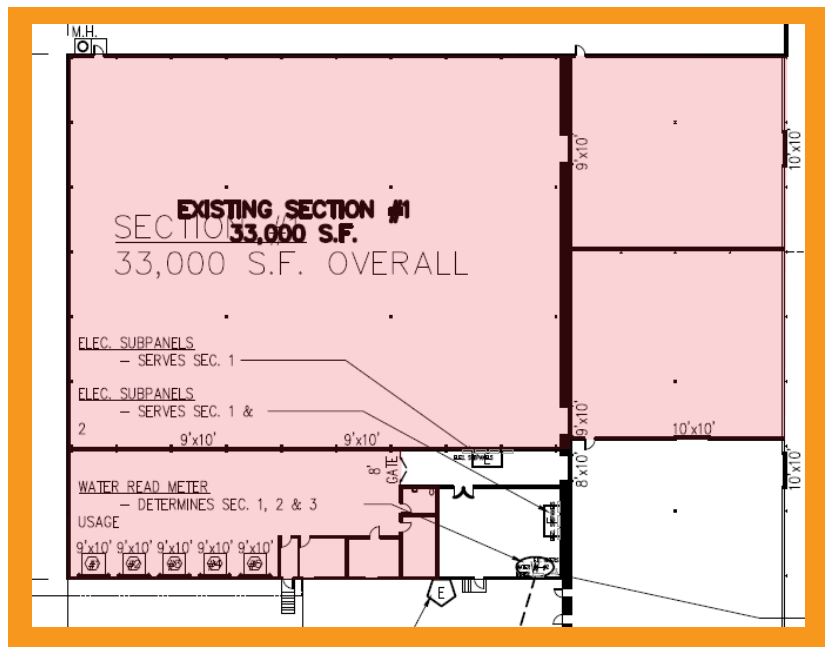
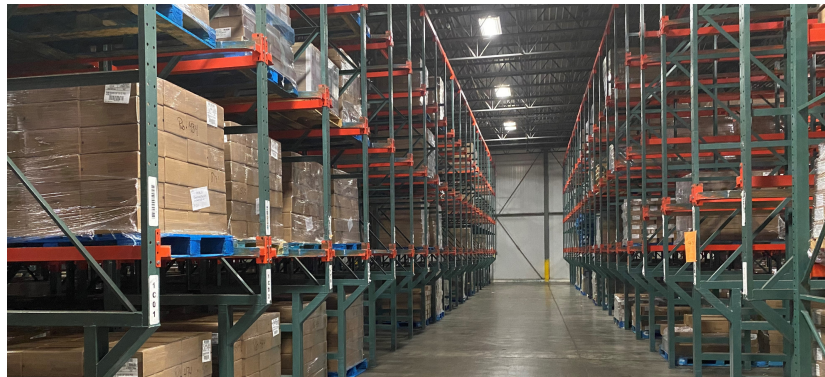
Fire Protection: .30/798

Zoning: Industrial

Parcel number: 3305522

Lease rate: \$4.80 PSF/YR NNN

\$0.40 PSF/MO NNN



Contact Us

Jamie Sager | Manager of Real Estate and Leasing

JamieSa@wowlogistics.com

(920)415-3745

